

# TecnoRampa



CERTIFIED COMPANY



# Edge dock

GAS SPRING

[tecnorampa.us](http://tecnorampa.us)

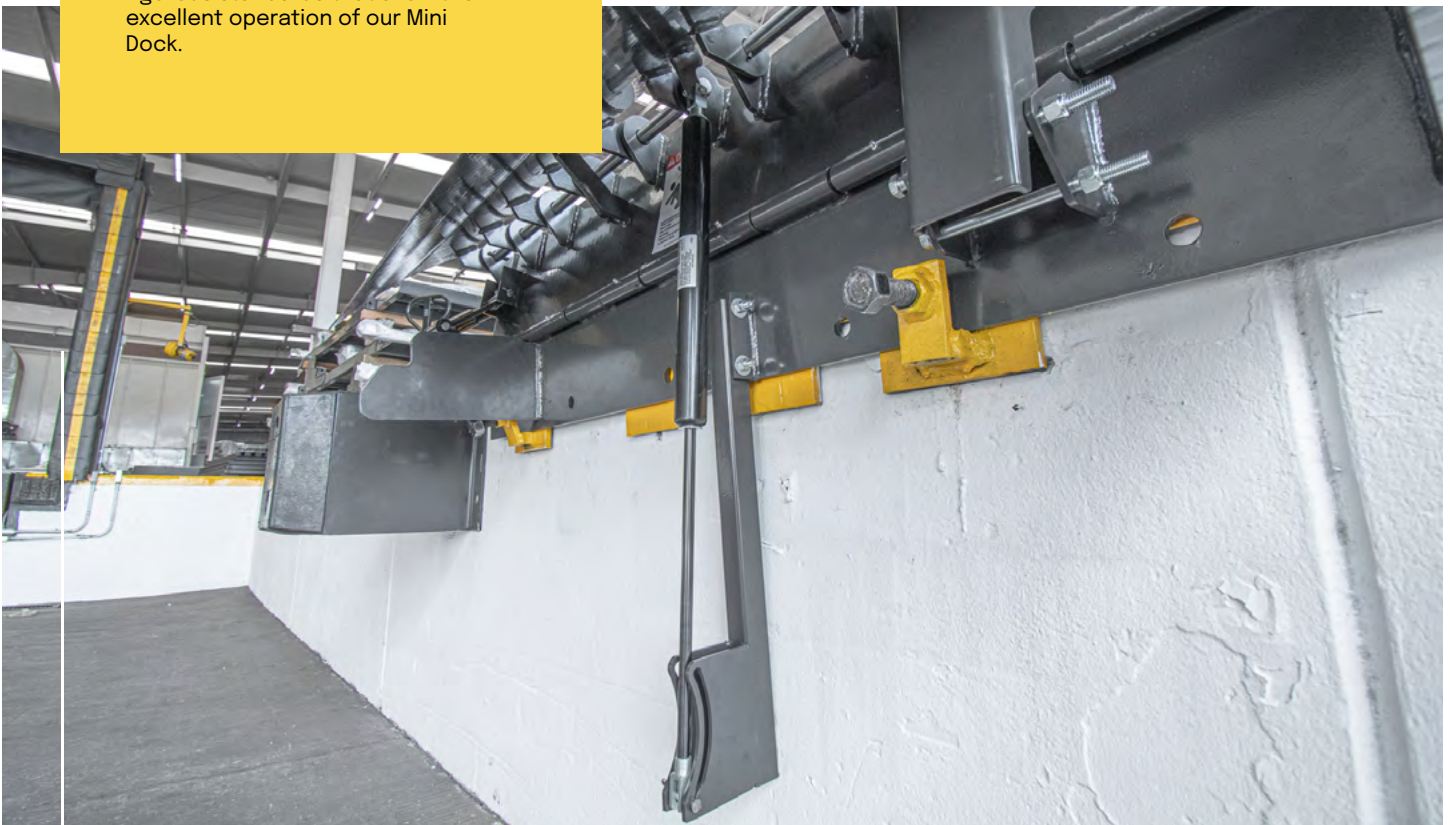
# □ We are manufacturers

- It is a product developed to support loading and unloading maneuvers, providing solutions for material movement on docks.

## ▶ SAFETY

# Complete control

All of our equipment has first-rate additions and is certified under rigorous standards that allow the excellent operation of our Mini Dock.

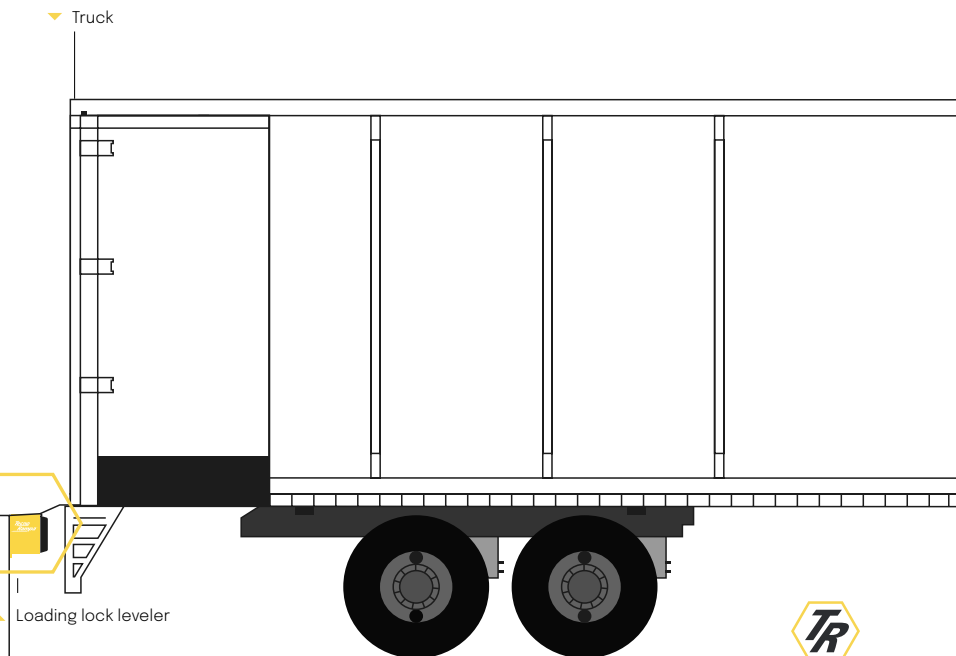
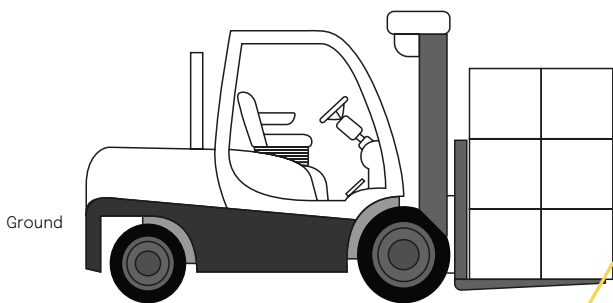


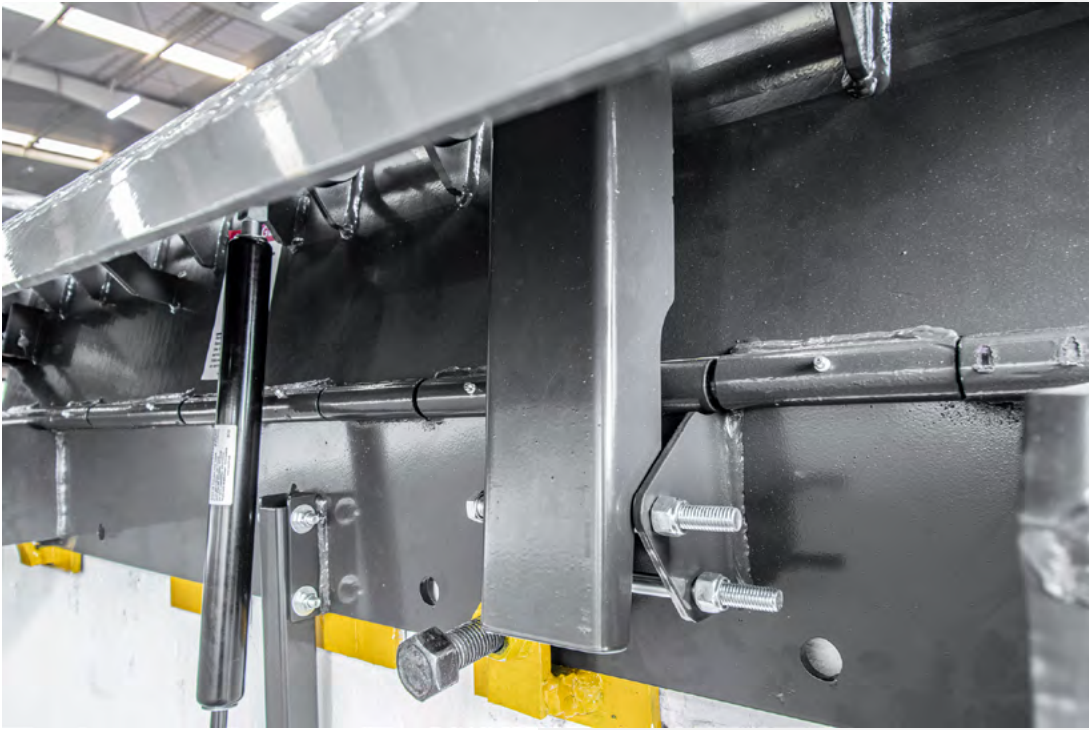
# Dock Edge GAS SPRING

The Dock Edge GAS SPRING is built with a high quality, robust structure and reliable operation, high strength anti-skid plate upper platform reinforced at the bottom of the platform at dynamic impact points, which prevents deformation and extends the life of the platform leveler.



CAPACITY	
Dynamic	Nominal
15,000 lbs (6,804 kg)	30,000 lbs (13,608 kg)





The **gas spring** system of the equipment is safe and easy to use.



- ▶ The Edge Dock Gas Spring was designed to make the connection between a loading dock and the transport floor, facilitating movement between them.



- ▶ One the lip is making the connection between the platform and the transport, it can be used.
- ▶ no electrical connection is required and operation is carried out by simply lifting a lever.
- ▶ Metal platform with standard 14-3/4" lip, with a rated load capacity of 30,000 LB, (13607.771 KG).



# 2 bumpers included



## Installation requirements

NOMINAL DIMENSIONS:  
MINIMUM LENGTH:  
68" (1727MM)

RECOMMENDED LENGTH:  
101" (2565MM)

PIT MATERIAL:  
CONCRETE WITH A STRENGTH OF 250KG/CM2 WITH AT  
LEAST 15CM (6") THICK

## Technical details

**Platform plate:**  
1/2" Antidrip Plate

**Structure:**  
ASTM A-36 steel

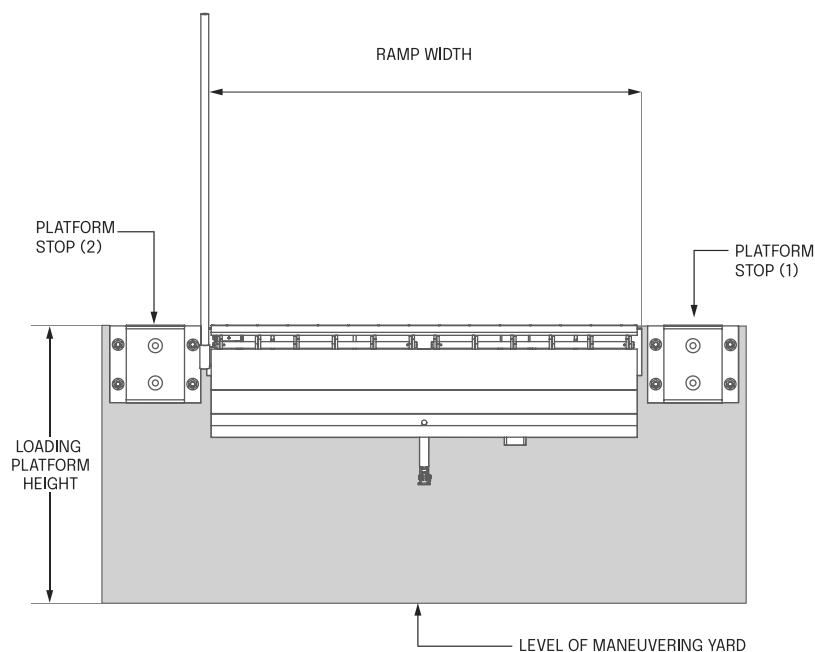
**Leveling:**  
5" (127 mm) Arrival and  
departure from platform  
level

**Lip:**  
14.94" long (380 mm)

**Lip plate:**  
1/2" Antidrip Plate

**Type:**  
Mechanical Gas Springs

**Finish:**  
Lead Grey / Yellow  
Electrostatic painting



# ▶ Installation



## WARNING

DO NOT INSTALL, OPERATE AND/OR REPAIR THIS LEVELER UNTIL YOU HAVE READ AND UNDERSTAND ALL SAFETY INFORMATION AND INSTRUCTIONS CONTAINED HEREIN AND ON THE LEVELER. DO NOT WORK UNDER OR AROUND THE LEVELER BEING INSTALLED WITHOUT FIRST PLACING ADEQUATE BARRIERS TO PREVENT VEHICULAR TRAFFIC FROM ENTERING THE WORK AREA. KEEP HANDS AND FEET AWAY FROM THE PLATFORM LEVELER ATTACHMENT POINTS.

## ▶ INSTALLATION EDGE DOCK GAS SPRING

- 1 Inspect the curb angle of the loading platform and verify that it is firmly embedded and anchored in the concrete. If there is no curb angle report it to the personnel in charge and do not proceed with the installation until the necessary modifications have been made.
- 2 Remove the straps holding the leveler and discard all shipping material.
- 3 Position the rear frame so that the top of the frame is flush with the level of the top of the curb angle. Make sure the top of the frame is parallel to the top of the curb angle.



## WARNING

THE LEVELER MUST BE WELDED TO A STEEL ANGLE SECURELY. DO NOT ATTEMPT TO USE BOLTS OR ANCHORS ALONE TO SECURE THE SIDEWALK LEVELER TO THE CONCRETE. USE CARE WHEN REMOVING THE STRAPS SECURING THE LEVELER. KEEP HANDS AWAY FROM THE ATTACHMENT POINTS AND WEAR APPROPRIATE SAFETY CLOTHING: GOGGLES, GLOVES AND WORK BOOTS.

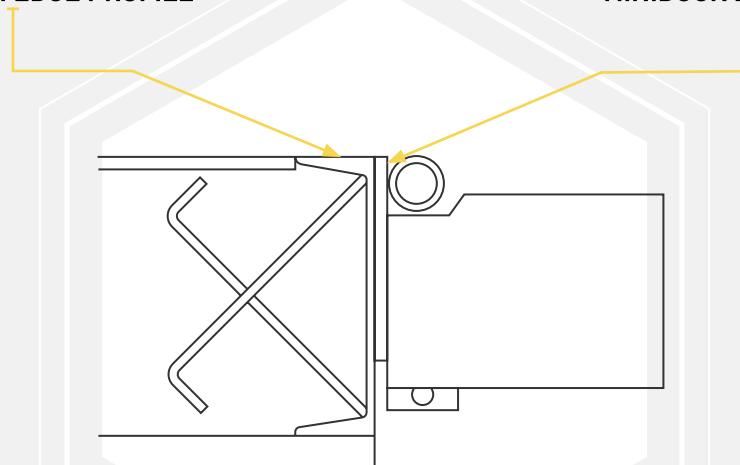


## WARNING

USE CAUTION WHEN LIFTING OR MOVING THE LEVELER. DO NOT ATTEMPT TO LIFT WITHOUT PROPER LIFTING EQUIPMENT THAT IS CAPABLE OF LIFTING AT LEAST 600 POUNDS.

PLATFORM EDGE PROFILE

MINIDOCK BACK PLATE

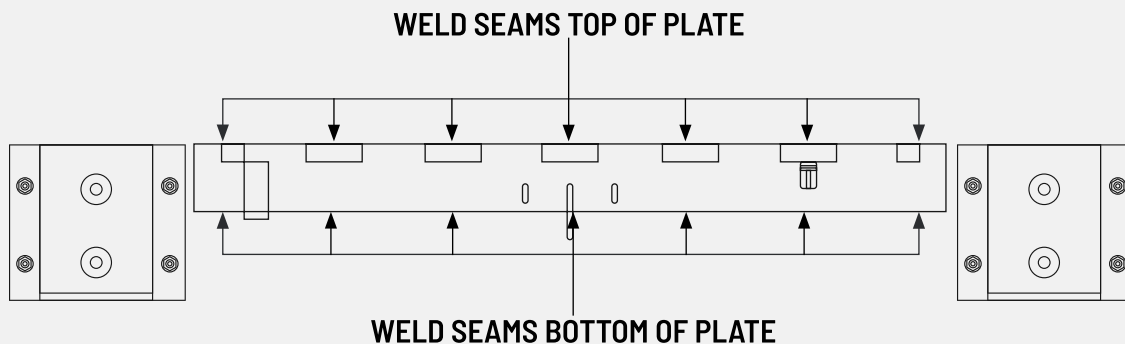


# Installation



- 4** Welding application to attach minidock.
- Tack welded the top of the rear frame securely to the curb angle.
  - Make sure the rear frame is firmly against the curb angle, and tack weld the bottom of the rear frame to the curb profile.
  - Finish welding the top of the back frame to the curb angle. Weld 1/4" x 4-1/2" (6mm x 115mm) long welds on both ends of the back frame. Repeat 1/4" welds on 10.25" (260mm) centers along the entire length of the rear frame.
  - Apply the same weld to the bottom of the rear frame at the curb angle. Weld 1/4" x 4-1/2" (6mm x 115mm) long welds at both ends of the bottom of the rear frame. Repeat 1/4" welds on 10.25" (260mm) centers along the entire length of the rear frame.
  - Vertical weld both ends of back frame to curb angle, complete length of vertical contact.

<b>WELDING POINTS TOP SIDE OF PLATE</b>
7018 SOLDER APPLIED WITH DIMENSIONS OF 1/4" X 4-1/2" WITH 10-1/4" CENTER-TO-CENTER SPACING.
<b>WELDING POINTS BOTTOM SIDE OF PLATE</b>
7018 SOLDER APPLIED WITH DIMENSIONS OF 1/4" X 4-1/2" WITH 10-1/4" CENTER-TO-CENTER SPACING.
<b>EXTERNAL PLATE WELDING POINTS</b>
7018 SOLDER APPLIED WITH 1/4" DIMENSIONS OVER THE ENTIRE VERTICAL CONTACT LENGTH



- 5** Placement of sockets and/or weld on bumpers once back plate weld attachment is complete.
- Position the left stop bracket (on the driveway in front of the dock leveler) so that there is a 1" (25 mm) clearance between the side of the bracket and the deck plate, and the bracket is level with the top of the curb angle, and the bracket is level with the top of the curb angle and plug the mounting holes that overlap the curb angle with weld. Install 3/4" X 4-3/4" cleat anchors in the concrete in the mounting holes that are not welded.
  - Position the right stop bracket so that there is a 1" (25 mm) clearance between the bracket and the dock leveler cover plate. Weld all horizontal and vertical contact areas between bracket, curb angle and mounting holes. Install 3/4" X 4-3/4" concrete cleat anchors in the mounting holes that are not welded.

- 6** Installation survey.
- Clean the entire work area and apply touch-up paint where required.
  - Ensure that all concrete anchors have been secured.
- 7** Test operate the unit through several complete cycles of operation.
- Refer to: HOW TO OPERATE. If problems are observed, refer to section MINIDOCK SETTINGS



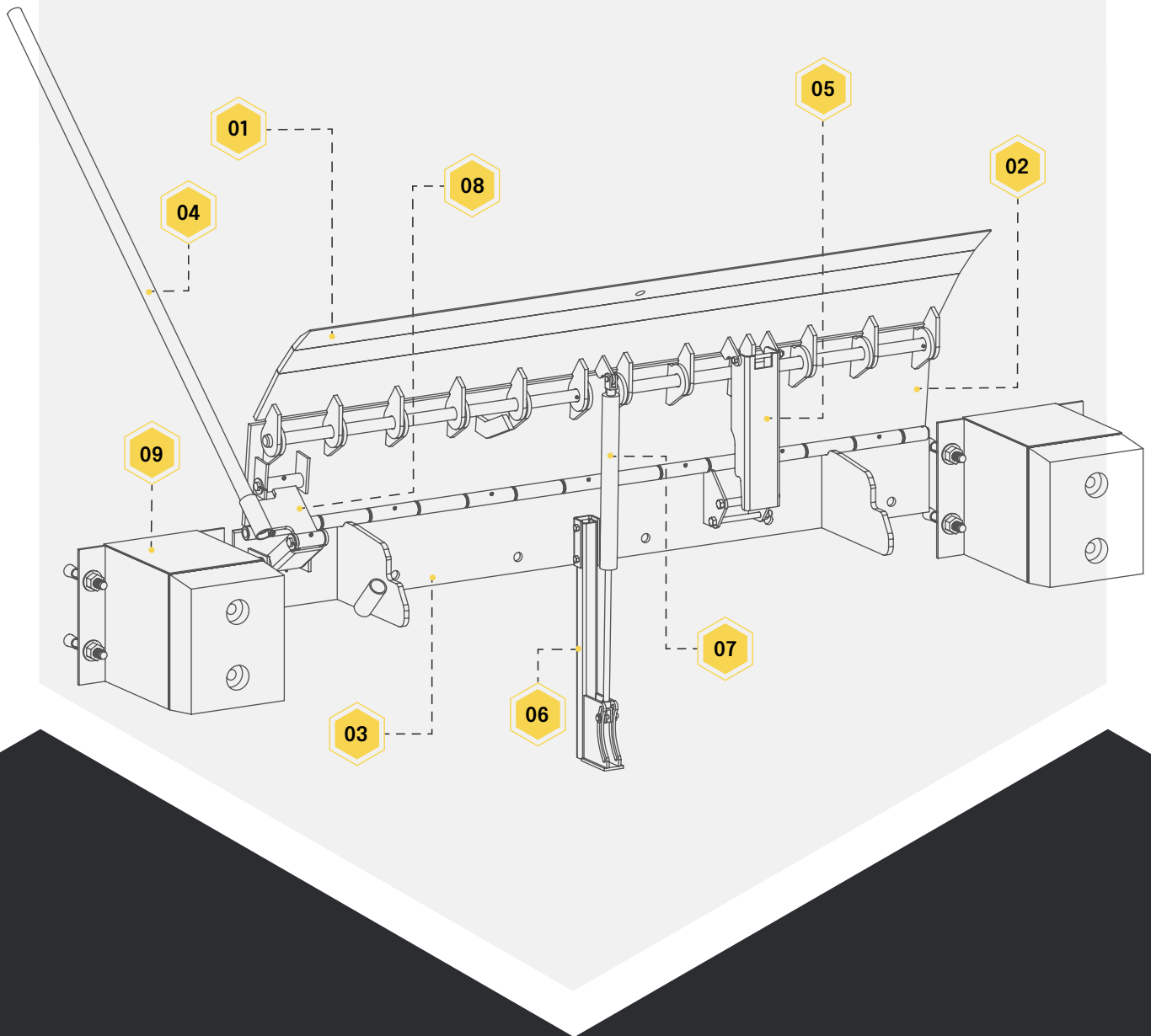


# TOTAL WARRANTY

Tecnorampa warrants by and for the sole benefit of the original purchaser of the manufactured Minidock that the Product will be free from defects in materials and workmanship.



# Inventory of parts



NO.	DESCRIPTION
01-	Lip
02-	Platform plate
03-	Rear plate
04-	Grab Handle
05-	Lip Extension Backing Plate
06-	Gas Spring Cylinder Pivot
07-	Gas Spring Cylinder
08-	Drive Links
09-	Minidock Platform Stop

# *TecnoRampa*<sup>™</sup>



Toll-free code  
01 800 6230 332 / 01 800 8380 850  
01 (427) 272 81 19 / 01 (427) 272 4041

Tecnorampa USA 1586 N Goldenrod Road,  
Orlando, Florida